

**CROSSBOND**<sup>®</sup>  
Aluminium Composite Panel



*True  
Stone*  
*Create your legacy*

## GROUP PROFILE

The Metro Group was originally founded in 1993. So, it is well into its third decade of successful operation. During this period the group has displayed a relentless pursuit of excellence. In the face of obvious market challenges the Metro Group has remained steadfast in its commitment to innovation. Today the Metro Group has become a household name when it comes to Aluminium Composite Panels, Aluminium Partition Panels, Plywood, Particle Boards, MDF Boards, HPL and PVC Laminates.

Metro Group manufactures its products across six top notch manufacturing units spread over Himachal Pradesh, Gujarat and Haryana. All the production units are equipped with machines imported from Germany, Japan, China, Italy and Sweden.

Metro Group was awarded the title of Power Brands Rising Star 2018 at a glittering ceremony at Hotel Orchid, Mumbai. Mr. Aman Garg, Director of Metro group was felicitated by Raveena Tandon (Indian Bollywood actress) and H. E. Adam Burakowski (Polish Ambassador to India). The event was conducted in association with Times Now and Bright Outdoor Media.

Metro Group has incessantly engaged in the endeavour of improving its product line and quality of product delivered. Customer satisfaction has always been the group's foremost priority. Today the group has made environmental friendly, sustainability a part of its corporate identity by removing harmful materials throughout its supply chain and production cycle.

## TRUE STONE

Crossbond True Stone finish ACP panels deliver an authentic visual impact to building facades. The natural texture of stone finish helps connect the architecture and exterior to the surrounding landscape. The natural and timeless color options, offer an enormous variety of design that can be tailored to each architect's vision.

Crossbond True Stone finish cladding is incredibly durable due to triple coat FEVE coating. This is particularly important for exterior application. It is nearly maintenance free and will last the test of time. The aluminum sub-construction allows for fast and efficient installation in a variety of dimensions, colours, and finishes. This cladding technique integrates majestic castle design into modern architecture.

## FEATURES



15 Year  
Warranty



Triple Coating  
FEVE



Advanced Anti  
Fading Technology

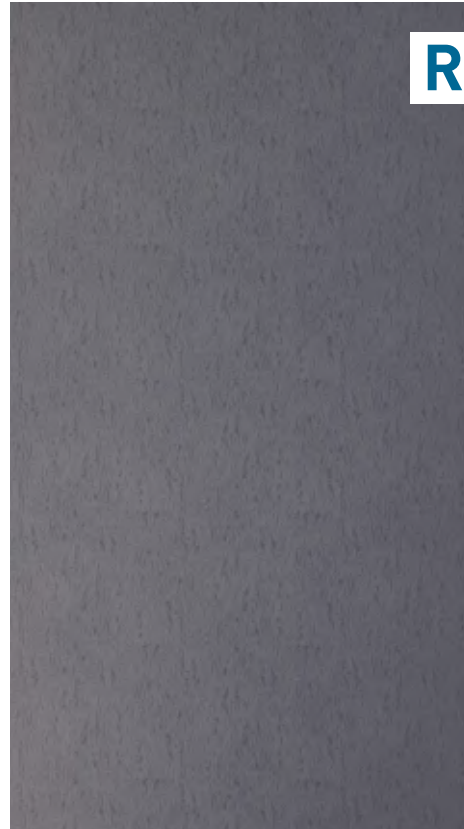


Synchronize  
Pattern



**ROYAL BLACK**  
**CB 701**

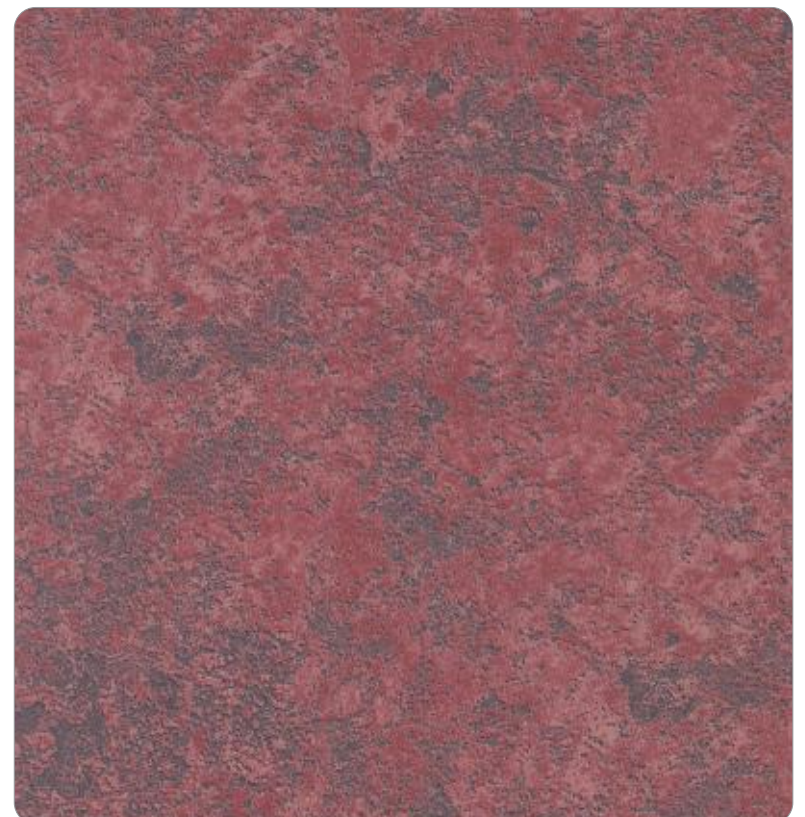
This is one of the rare black textured marble available. Only produced in the mines of Abu road, this black textured stone is a decorative marble used in temples and sculptures. It is well known for its homogeneous visual appearance, durability, and elegant style.



Actual Sheet Image

**IMPERIAL RED**  
**CB 702**

The Imperial Red marble is widely appreciated for providing high lustre and visual appeal to the area. This marble is widely demanded in modern offices, multinational companies, schools, hotels, and other industries because of their riotous appearance, long lasting lustre, and wear resistance.



Actual Sheet Image

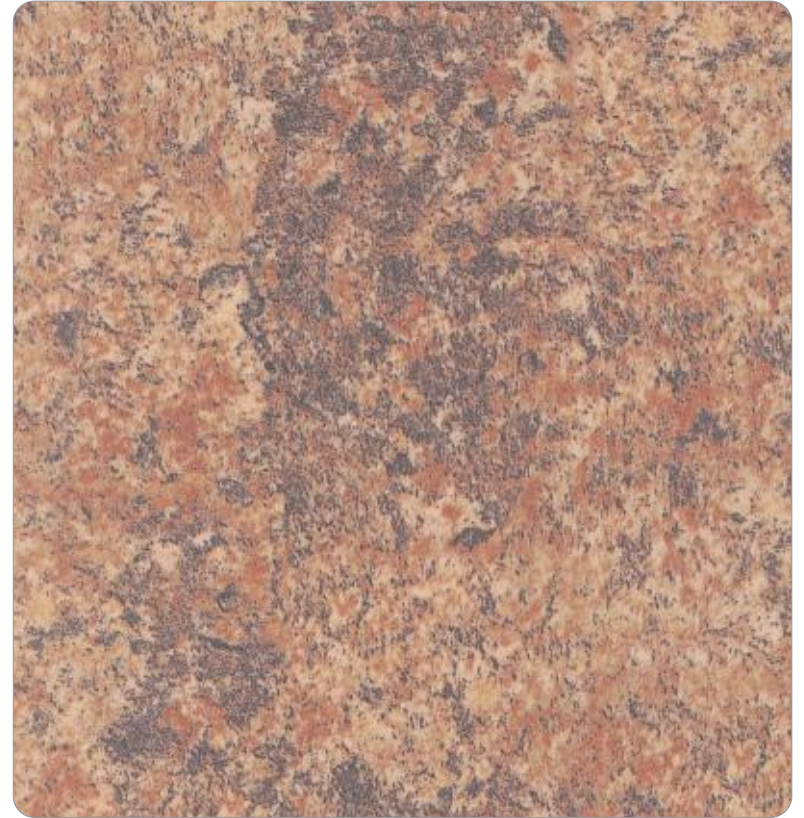
## KASHMIR GOLD

CB 703

Kashmir Gold having subtle veins with the shades of ivory, whites, and golden to add elegance and intrigue on the exterior of any building. Its coarse-grain texture and color contrasts create an elegant welcoming space. It also stands out in avant-garde exterior, paired with smooth surfaces, and materials such as stainless steel and glass.



Actual Sheet Image



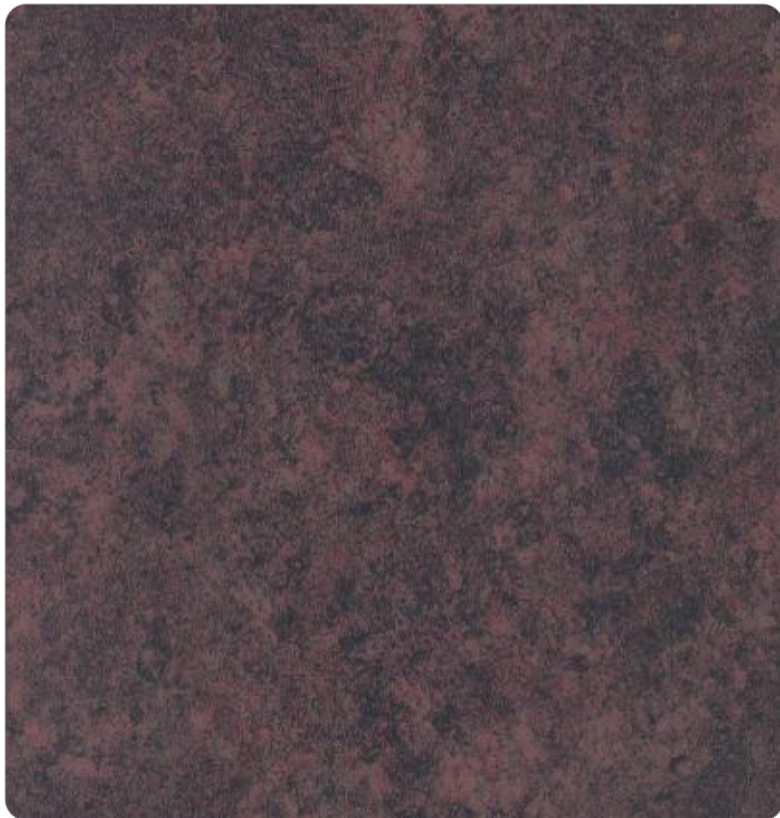
## KOTA BLUE

CB 704

The lustrous quality and the gorgeous patterns of Kota Blue goes really well with exteriors made out of stainless steel. It is one of the most balanced and serene ACP. For exotic looking surrounding. Kota Blue is hard, tough, oil resistant, and non-water absorbent, non-slippery and have excellent stone resolvability.



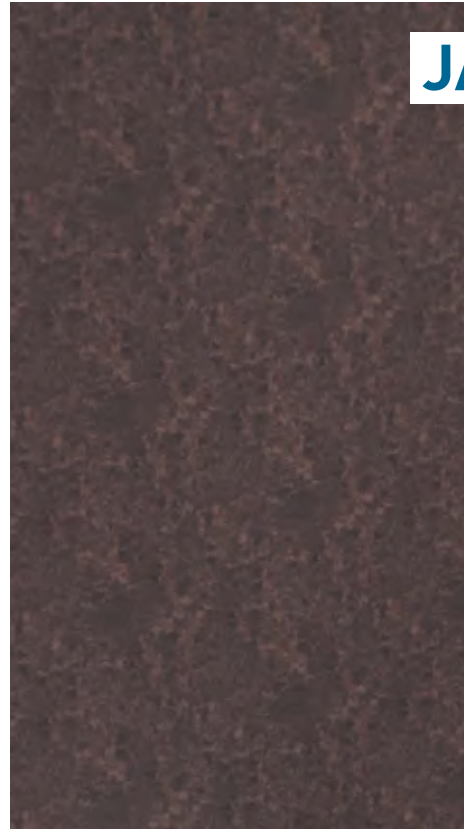
Actual Sheet Image



## **JAISALMER TAN**

### **CB 705**

This is one of the most versatile ACP. Similar to white ACP, they are attractive and fits into every design style. They do not come in one solid color, the flecks and veins in its unique pattern make them classy and attractive. From cream to golden yellow beige and dark chocolate browns, it is exemplary in creating both harmony and contrast for any surroundings.



Actual Sheet Image

## **MADHURAI BROWN**

### **CB 706**

To add a textured depth to every space, brown ACP is the best choice. With intricate tonal details, they offer sophisticated highlight to the surroundings. The chromatic intensity of brown granite takes its inspiration from the inner layers of the Earth, breathing life into the interior and exterior spaces.



Actual Sheet Image



## HIMALAYAN BLACK CB 707

It easily blends into the modern interior design and decoration projects in classic and homogeneous lines. The unmistakable darkish hue on the grey color brings undoubted personality to the natural granite. This gives the shape to the chromatic combination of great aesthetic beauty that kindles perennial snows in the grey ACP.



Actual Sheet Image

## PRODUCT SPECIFICATION

| Panel Dimensions  |  |
|---|--|
| Standard Sizes:   | 1220 x 3660 mm<br>1220 x 3050 mm<br>1220 x 2440 mm |
| Coil Thickness  | 0.25mm & 0.50mm                                    |
| Panel Thickness   | 3mm to 6mm   |
| Coating   | FEVE   |
| Product Tolerance   |  |
| Thickness   | ± 0.2mm  |
| Squareness  | Max 4.0mm  |
| Bow   | 0.5% of Length & Width                             |
| *1525mm width and customized lengths available on request |  |

It is recommended to install the panels in the same direction as marked on the protective peel-off film and to remove the peel-off film within 45 days of install completion. To ensure color consistency, the total project requirement should be placed in one order.

Company's warranty is limited to cost of product only.

## CROSSBOND ELITE FR

### FR ACP

- Inhibits Fire Spread
- No Smoke
- No Droplets

### Regular ACP

- Active Fire Spread
- Smoke Development
- Flame Development

# CROSSBOND ELITE FR

tested by  
**warringtonfire**

## Understanding Fire Retardancy

Fire protection for a building starts at the planning stage. Minimizing fire risk, particularly in places with significant human traffic, such as, transit terminals, shopping malls, hospitals, schools and high-rise buildings is of utmost importance.

Throughout India, architects and building owners are required to meet stringent fire safety regulations aimed at protecting inhibitors and visitors of buildings.

Choice of materials used is very important and attention needs to be paid in selecting right grade of Fire Retardant (FR) Aluminium Composite Panel. An educated choice will help mitigate the risk caused by fire. Performance factors that need to be evaluated include core composition, spread of fire, droplets and smoke emission.

## WHY CROSSBOND ELITE FR

Crossbond Elite FR is the new generation exterior fire-retardant panel composed of two aluminium cover sheets sandwiched with a mineral filled polymer core. The aluminium surface is coil coated with an advanced PVDF/Lumiflon resin in a variety of finishes and colours.

Thanks to the mineral filled core Crossbond Elite FR meets all stringent fire regulations world-wide.

## Core Details

Crossbond Elite FR's patented core is formulated with a high percentage of Magnesium Hydroxide and Aluminium Oxide. These constituents are high quality non-halogenated FR materials. These materials are greatly non-combustible and do not produce toxic gases. The concentration of these materials is greater than 70%. Significant testing has proved that these materials restrict fire spread and no hazardous droplets are formed. Hence, Crossbond Elite FR is an extremely safe cladding solution against fire, for buildings worldwide.

| Fire Behaviour / Class               |                     | Criteria                            | Compliance |
|--------------------------------------|---------------------|-------------------------------------|------------|
| German Standard                      | DIN 4102-1          | Class B1                            | Compliant  |
| European Union Standard              | EN ISO 13501-1      | Class B                             | Compliant  |
| Flaming Droplets                     | EN 11925 - (d0 )    | Flaming droplets- None              | Compliant  |
| Fire Growth Rate                     | EN ISO 13823 - (s1) | FIGRA $\leq$ 200 W.s-1              | Compliant  |
| Total heat release in first 600sec   |                     | THR600s $\leq$ 7.5 MJ               | Compliant  |
| Smoke Growth Rate                    |                     | SMOGRA $\leq$ 30m <sup>2</sup> .s-2 | Compliant  |
| Lateral Flame Spread                 |                     | LFS - None                          | Compliant  |
| Total smoke produced in first 600sec |                     | TSP600s $\leq$ 50m <sup>2</sup>     | Compliant  |
| British Standard                     | BS 476              | Class 0                             | Compliant  |
| Fire propagation Index (I)           | Part 6              | Overall, I<12 & sub i1< 6           | Compliant  |
| Flame spread on Surface              | Part 7              | < 165mm for class 1                 | Compliant  |



### METRO PANELS INDUSTRIES

Works : Survey No. 757, Village Borisana,  
Taluka Kadi, District Mehsana, Gujarat-382715  
Head Office : D-20/1, 2nd Floor,  
Okhla Industrial Area, Phase-II, New Delhi-110020  
Call : +91-11-41740150  
Email : info@crossbondindia.com  
Web : www.crossbondindia.com

Follow us :      

### METRO DECORATIVE PVT. LTD.

Works : Village Oogli, Yamuna Nagar Road,  
Kala Amb, Himachal Pradesh-173030



An ISO 9001:2015, ISO 14001:2015, OHSAS 18001:2007 Certified Company

Publication: Vol 1-2019